



firefly



firefly

A PLACE
TO ALLOW
OUR KIDS TO
REACH THEIR
FULL
POTENTIAL

**BY MINIMIZING THEIR
TIME ON DEVICES**



firefly



A PLACE
WHERE
ACTIVITIES
ARE PLANNED
AND EVENTS
ARE CREATED

**BY A FULL-TIME
ACTIVITIES DIRECTOR**

firefly

A PLACE
WHERE KIDS
WILLINGLY
DITCH THEIR
DEVICES

AND CHOOSE A LIFE
OF ADVENTURE AND
ACTIVITY



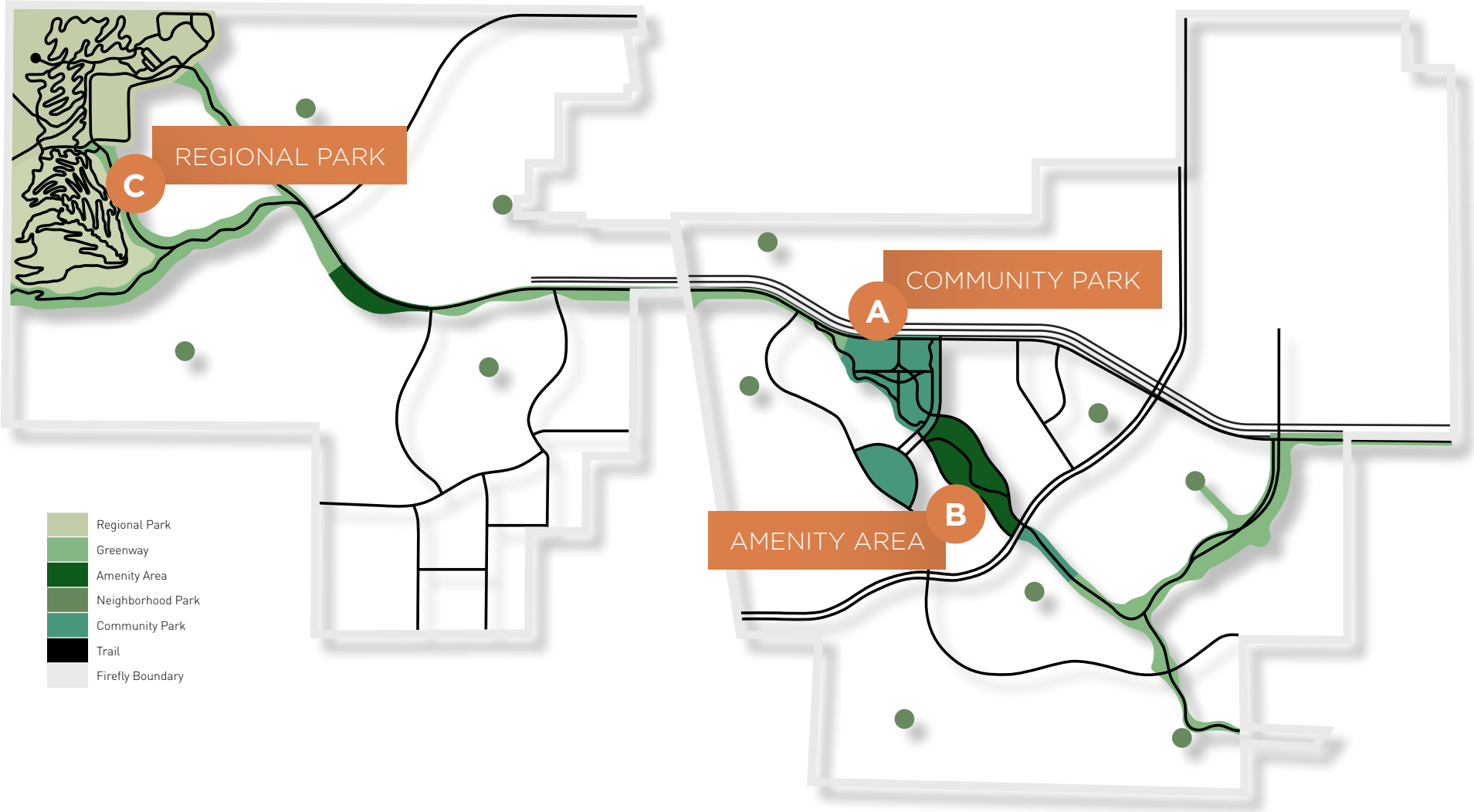
firefly



A PLACE WITH
OVER 400
ACRES OF
PARKS, TRAILS
AND OPEN
SPACE

**WITH CURATED
AMENITIES DESIGNED
TO GET YOUR FAMILY
OUT IN NATURE**

firefly



This plan is conceptual and subject to change.

A close-up, low-angle shot of a person's foot wearing a purple sneaker with white laces, standing on a wooden skateboard. The skateboard is on a light-colored paved surface. The background is a warm, golden-hued outdoor setting with trees and a fence, suggesting a park or recreational area.

A

COMMUNITY PARK

- REGIONAL TRAIL
- MULTI-PURPOSE SPORTS FIELDS
- INDOOR/OUTDOOR PLAYGROUND
- COVERED PICNIC PAVILION
- PICKLEBALL COURTS
- BASKETBALL COURTS
- WHEELS PARK
- UNDERPASS CLIMBING AREA

firefly



This plan is conceptual and subject to change.



This plan is conceptual and subject to change.



This plan is conceptual and subject to change.



This plan is conceptual and subject to change.







B

AMENITY AREA

- AMPHITHEATER
- AMENITY BUILDING
- SPLASH PAD
- ENTRY PLAZA
- SPORTS LAWN
- SOCCER FIELDS
- REGIONAL TRAILS

firefly



- ⑪ INDOOR/OUTDOOR DESTINATION PLAYGROUND
- ⑫ UNDERPASS AMPHITHEATER
- ⑬ MAIN AMENITY BUILDING
- ⑭ SPLASH PAD
- ⑮ ENTRY PLAZA
- ⑯ BOULDER CLIMBING FEATURE
- ⑰ EVENT / SPORTS LAWN / U8 SOCCER
- ⑱ PARKING
- ⑲ REGIONAL TRAIL

This plan is conceptual and subject to change.



This plan is conceptual and subject to change.



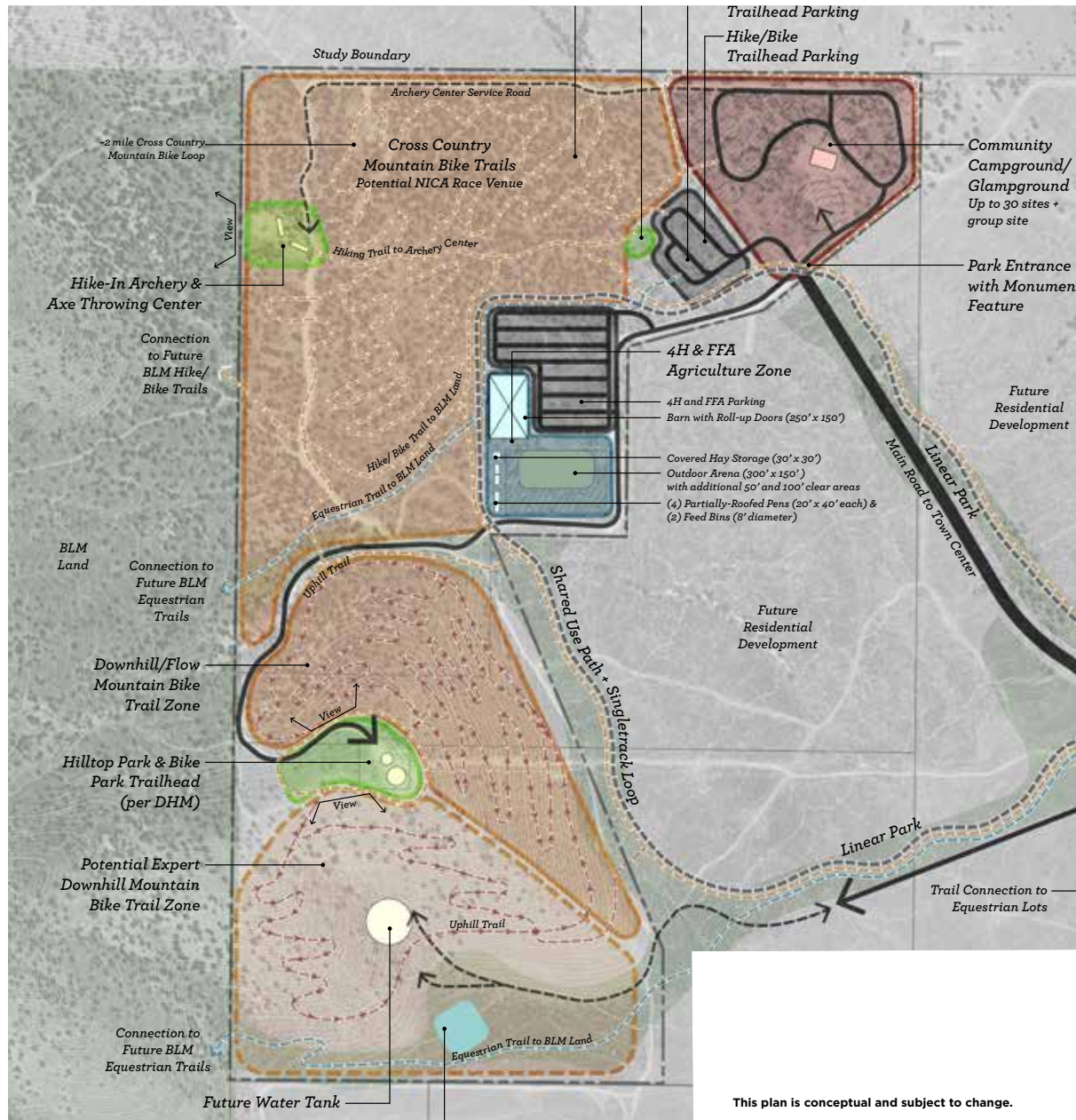
This plan is conceptual and subject to change.



REGIONAL PARK

- MOUNTAIN BIKING TRAILS
 - MULTI USE PEDAL-UP TRAILS
 - BEGINNER FLOW TRAIL
 - INTERMEDIATE FLOW TRAIL WITH JUMPS
 - ADVANCED TECHNICAL DOWNHILL TRAILS
 - SLOPESTYLE PUMP TRACK
- EQUESTRIAN TRAILS
- VIEWING AREAS

firefly



Legend

	Passive Recreation & Trails Zone		Road
	Active Recreation Zone		Service Road
	Campground Zone		Shared Use Path
	Parking		Multi-use Trail
	Agriculture Zone		Directional Mountain Bike Trail
	Parks and Public Land		Equestrian Trail
			Study Boundary

North

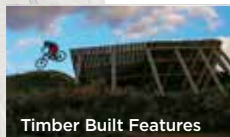
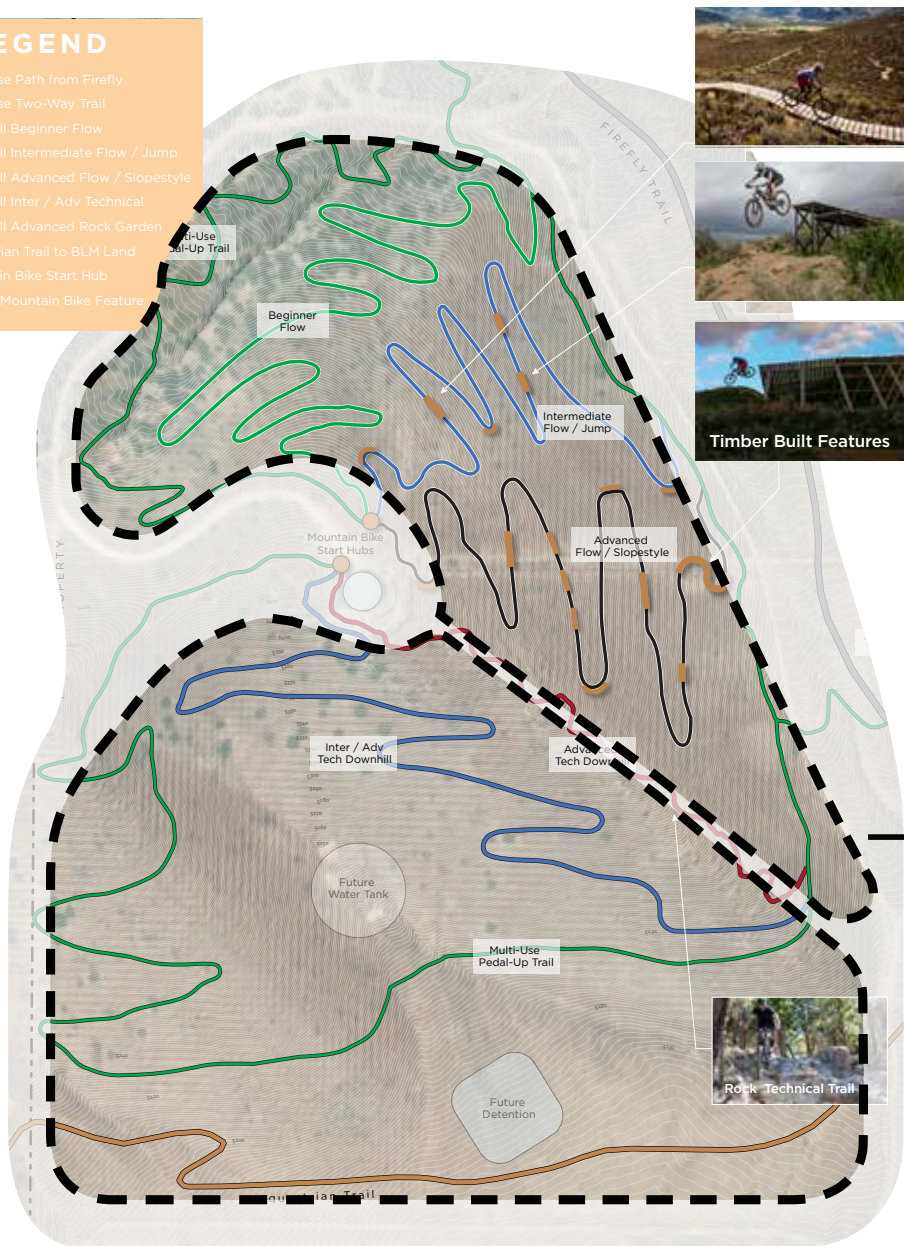
1" = 200'-0"

This plan is conceptual and subject to change.



LEGEND

- Multi-Use Path from Firefly
- Multi-Use Two-Way Trail
- Downhill Beginner Flow
- Downhill Intermediate Flow / Jump
- Downhill Advanced Flow / Slopestyle
- Downhill Inter / Adv Technical
- Downhill Advanced Rock Garden
- Multi-Use Pedal-Up Trail
- Equestrian Trail to BLM Land
- Mountain Bike Start Hub
- Timber Mountain Bike Feature



Timber Built Features



Rock Technical Trail



Legend

- Passive Recreation & Trails Zone
- Active Recreation Zone
- Campground Zone
- Parking
- Agriculture Zone
- Parks and Public Land
- Study Boundary
- Road
- Service Road
- Shared Use Path
- Multi-use Trail
- Equestrian Trail
- Directional
- Mountain Bike
- Trails by Difficulty
- Bike Features

Scale: 1" = 200' 0"
 0 200 400 ft

This plan is conceptual and subject to change.



This plan is conceptual and subject to change.



This plan is conceptual and subject to change.



This plan is conceptual and subject to change.



This plan is conceptual and subject to change.



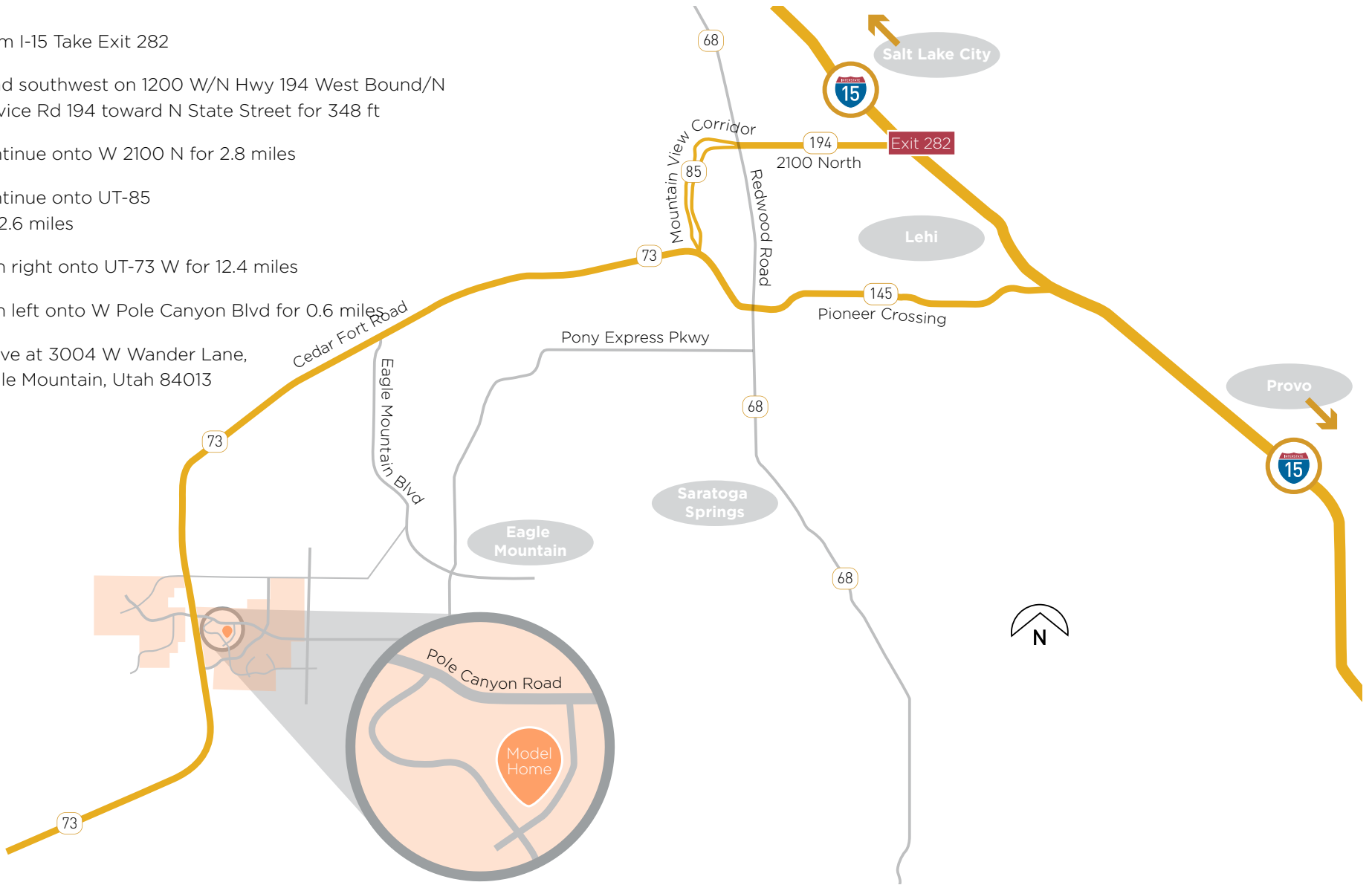


A PLACE
WHERE
YOU'LL
LOVE
WHERE
YOU LIVE

**AND SO WILL
YOUR KIDS**

firefly

1. From I-15 Take Exit 282
2. Head southwest on 1200 W/N Hwy 194 West Bound/N Service Rd 194 toward N State Street for 348 ft
3. Continue onto W 2100 N for 2.8 miles
4. Continue onto UT-85 for 2.6 miles
5. Turn right onto UT-73 W for 12.4 miles
6. Turn left onto W Pole Canyon Blvd for 0.6 miles
7. Arrive at 3004 W Wander Lane, Eagle Mountain, Utah 84013





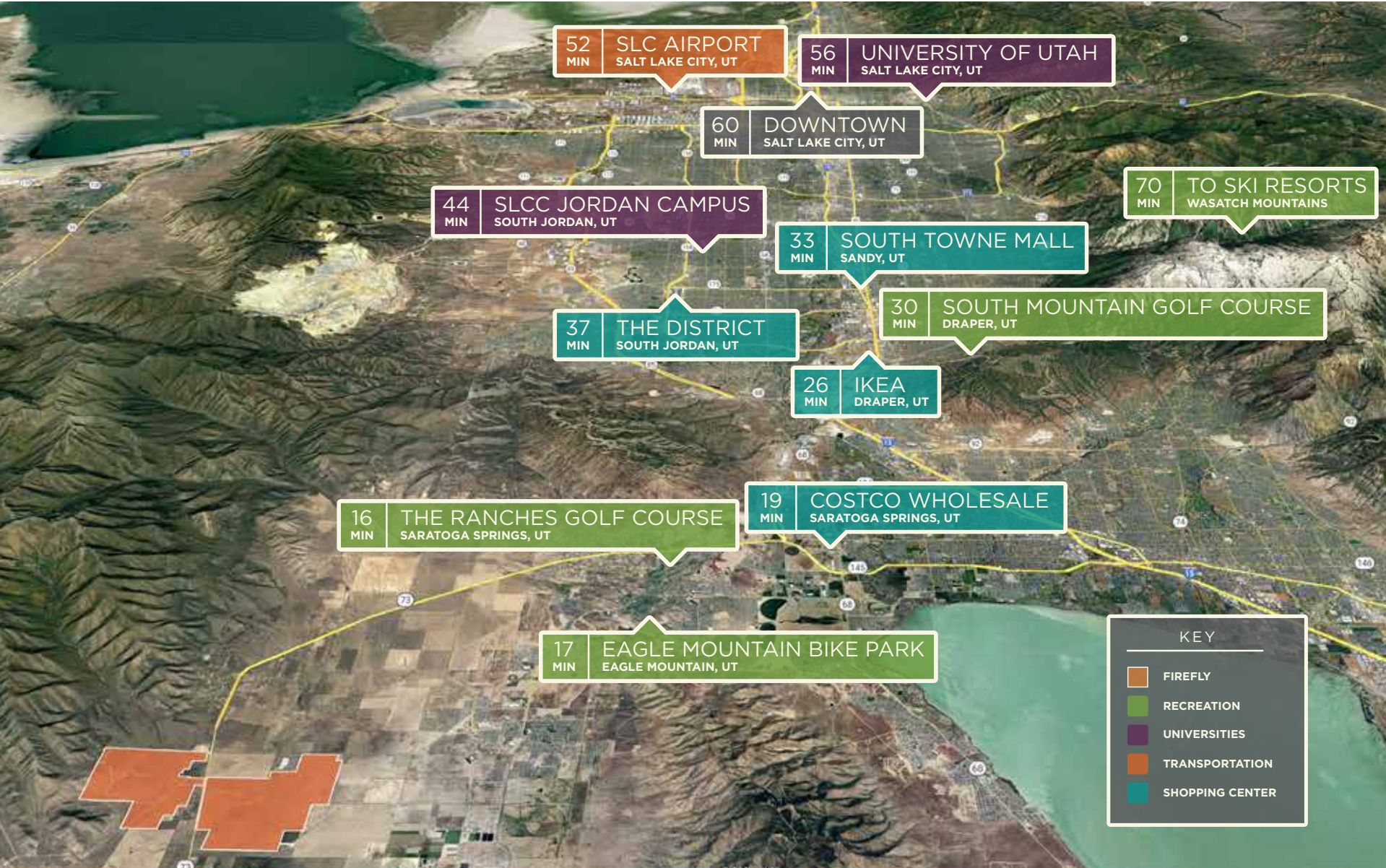
A PLACE
WITH SO
MANY THINGS
TO DO
INSIDE THE
COMMUNITY

AND ALL AROUND THE
COMMUNITY

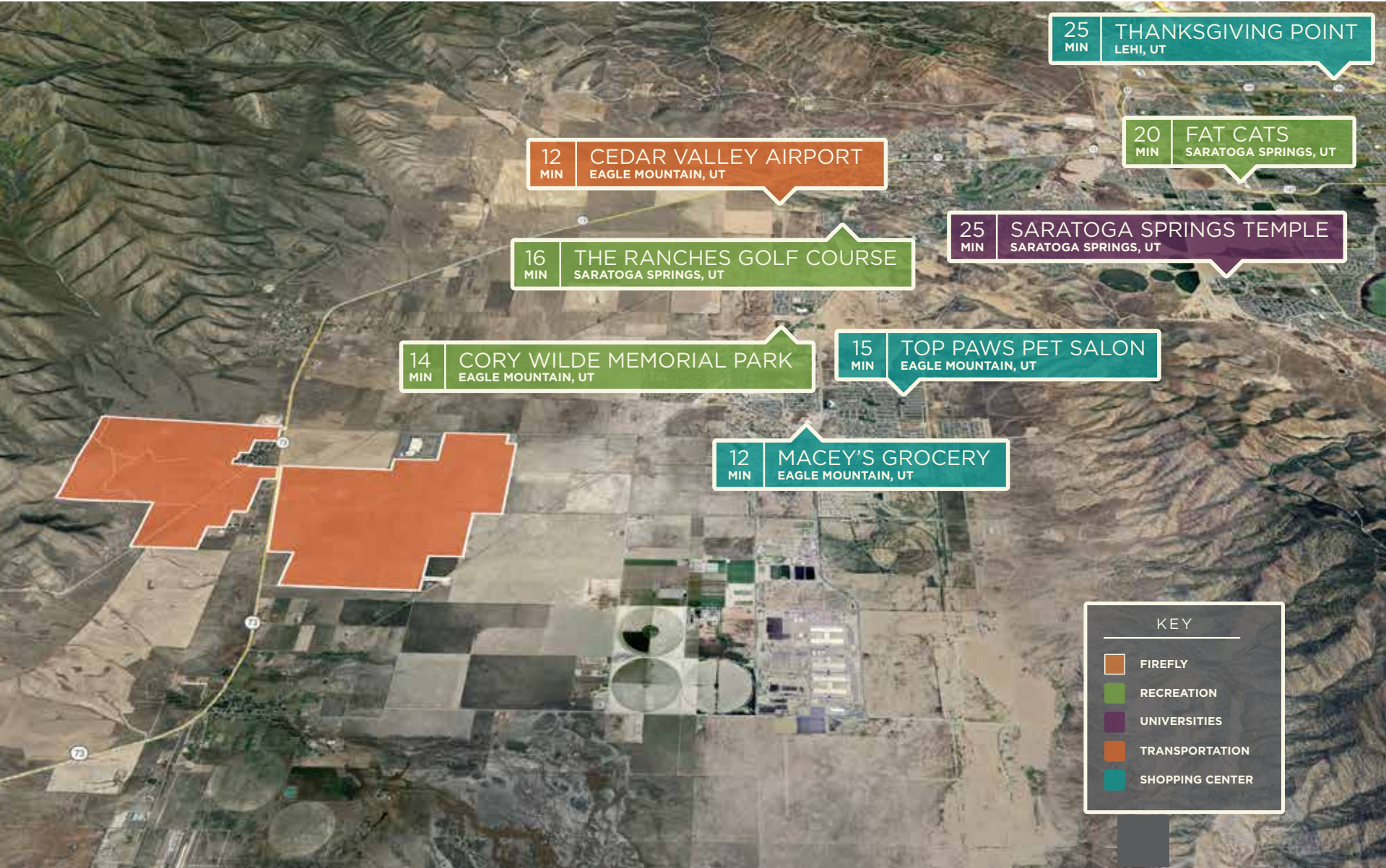


firefly

SALT LAKE COUNTY & POINTS OF INTEREST



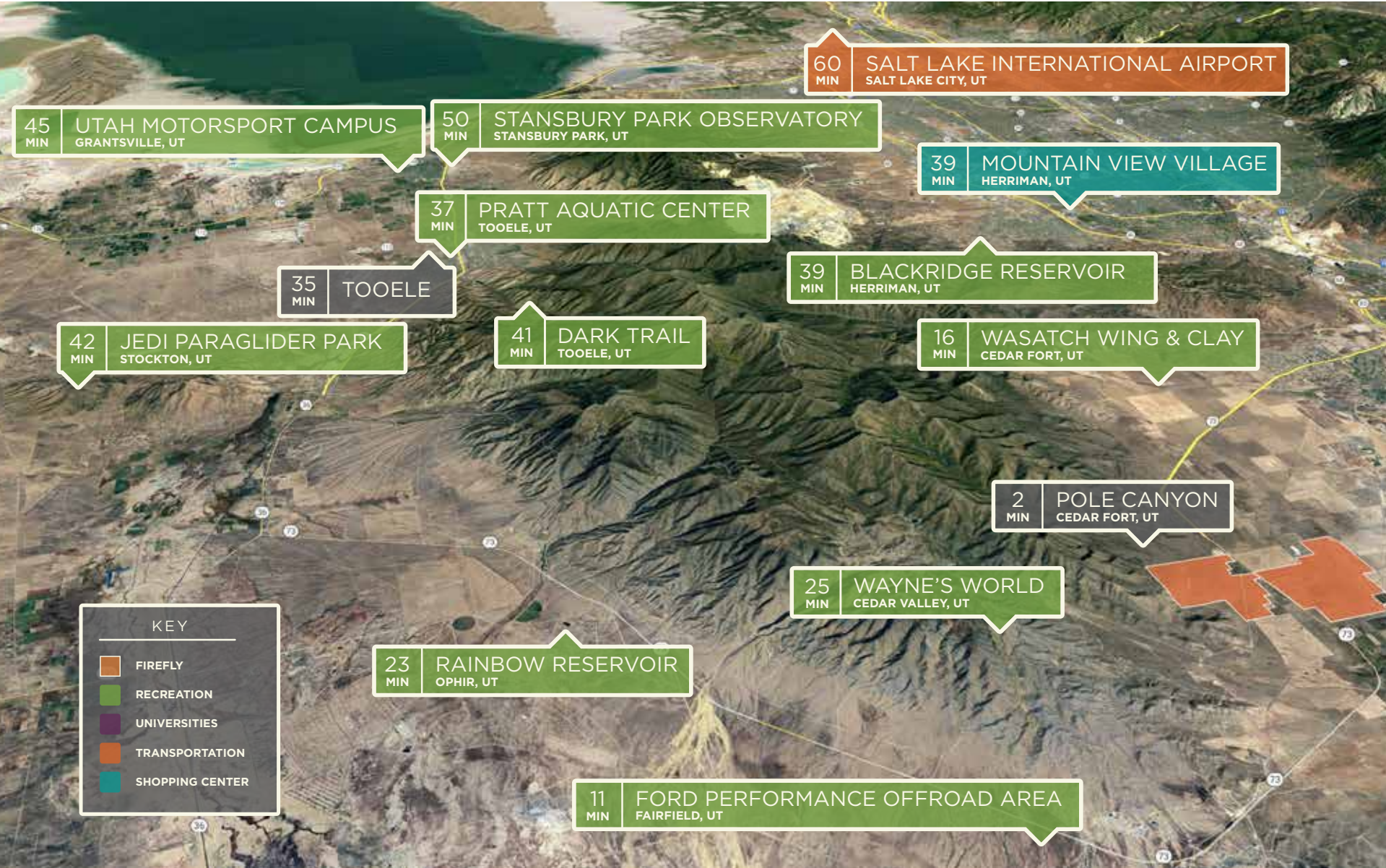
LOCAL POINTS OF INTEREST



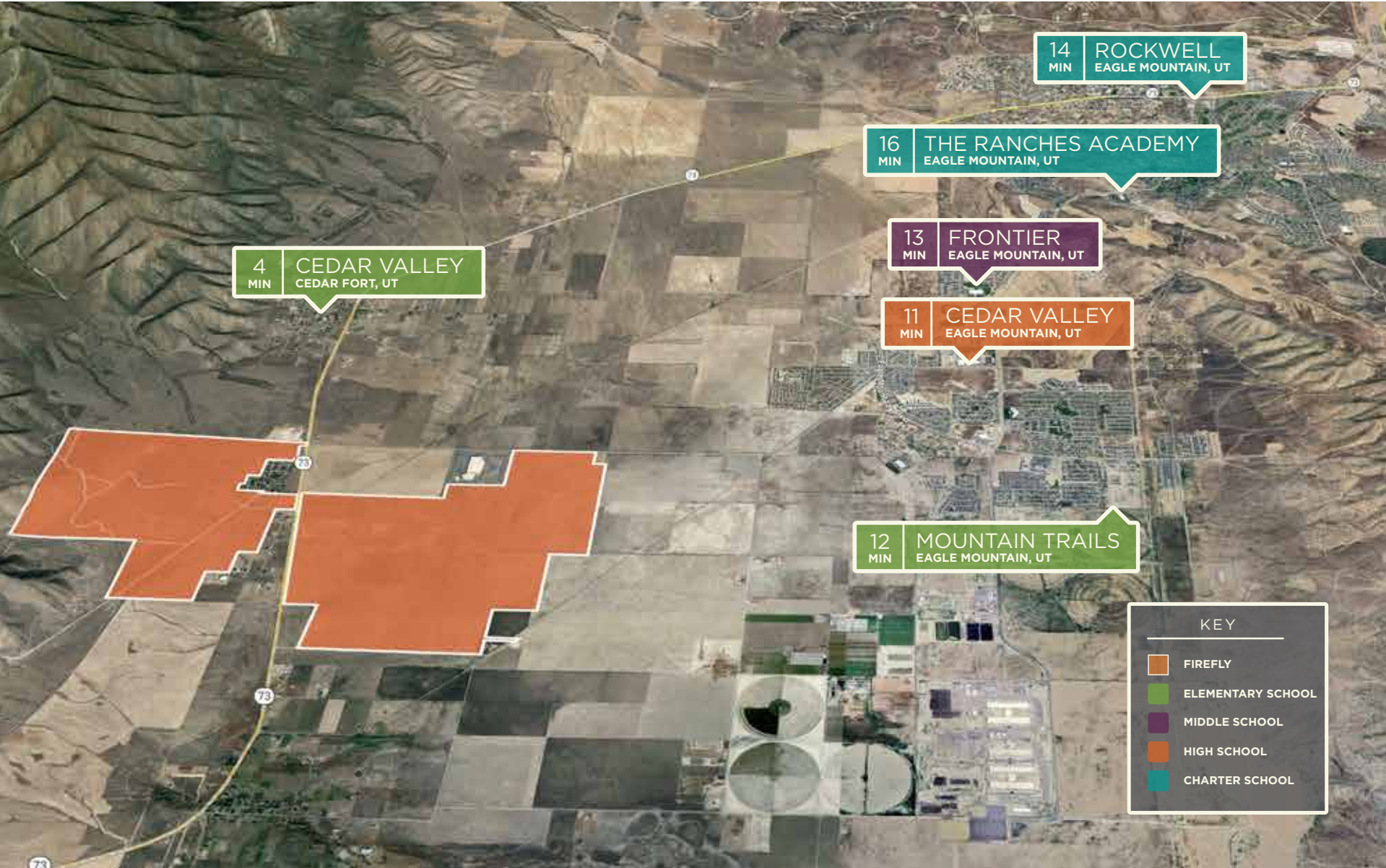
UTAH COUNTY & POINTS OF INTEREST



TOOELE COUNTY & POINTS OF INTEREST



LOCAL SCHOOLS



AT FIREFLY, FAMILIES
ARE MAKING
MEMORIES, AND

WHEN KIDS
GROW UP,
THEY HAVE
THE BEST
STORIES TO
TELL



firefly

BUILDER DETAILS



GENERAL INFORMATION COMMUNITY INFO PACK



MODELS							
LOT NUMBER	FLOOR PLAN	SERIES	TYPE	BEDS	BATHS	FINISHED SQ FT	TOTAL SQ FT
	Keystone	Architectural	2,486	X	X	2,486	3,505
	Sun Valley	Resort	3,158	X	X	3,158	5,166
	Keystone	Architectural	2,486	X	X	2,486	3,505
	Sun Valley	Resort	3,158	X	X	3,158	5,166







SCHOOLS				
TYPE OF SCHOOL	NAME	ADDRESS	WEBSITE	PHONE NUMBER
High School				





UTILITIES				
TYPE	COMPANY NAME	ADDRESS	WEBSITE	PHONE NUMBER
Internet				
Gas				
Electric				

All information including, but not limited to, pricing, renderings, and square footages are approximate and are subject to change at anytime without notice. Consult a Candlelight Homes Sales Representative for details.



DESIGNER SERIES							
ARCHITECTURAL	PLAN	WIDTH	FINISHED SQ FT	TOTAL SQ FT	BED	BATH	PRICE
	Banff	35'	1227	2466	1	1.5	TBD
	Interlaken	35'	2102	3067	3	2.5	TBD
	Monarch	35'	2270	3215	3	2.5	TBD
	Northstar	35'	2557	3725	4	2.5	TBD
	Pomerelle	40'	1529	3068	3	2	TBD
	Keystone	40'	2407	3547	3	2.5	TBD

DESIGNER SERIES							
ARCHITECTURAL	PLAN	WIDTH	FINISHED SQ FT	TOTAL SQ FT	BED	BATH	PRICE
	Snowmass	40'	2642	3821	4	2.5	TBD
	Mammoth	50'	2281	4518	3	2.5	TBD
	Durango	50'	2254	3809	4	2.5	TBD
	Sun Valley	50'	2584	4137	4	2.5	TBD
	Aspen	50'	2683	4110	3	2.5	TBD
	Silverton	50'	2857	4385	5	2.5	TBD

ARCHITECTURAL SERIES							
ARCHITECTURAL	PLAN	WIDTH	FINISHED SQ FT	TOTAL SQ FT	BED	BATH	PRICE
	Engelberg	30'	1,951	3,016	3	2.5	TBD
	Chamonix	30'	2,134	2,972	3	2.5	TBD
	Innsbruck	35'	2,286	3,426	4	2.5	TBD
	St. Mortiz	35'	2414	4030	4	2.5	TBD

TOWNHOME SERIES							
ARCHITECTURAL	PLAN	WIDTH	FINISHED SQ FT	TOTAL SQ FT	BED	BATH	PRICE
	Cascade Unit A1	N/A	1608	2171	3	2.5	TBD
	Cottonwood Unit A2	N/A	1625	2235	3	2.5	TBD
	Sierra Unit T	N/A	1468	2012	3	2.5	TBD
	Wasatch Unit Y	N/A	1366	1934	3	2.5	TBD



Ranked 1027 in the U.S. and 12 in the Salt Lake City metro area in 2014 in the Inc. 5000 Fastest-Growing Privately Held Companies in America



Three consecutive years as one of Utah Business Magazine's Fast 50 companies and two consecutive years as one of Utah's Emerging 8 companies



Three consecutive years as one of the Emerging Elite Companies and three consecutive years as one of the Utah 100 by MountainWest Capital Network



Professional Builder awards for Housing Giants and 40 Under 40



Two consecutive years as Builder Magazine's Top 200 Builders in the nation



Four consecutive years as one of Utah Valley Magazine's Best Home Builders



Utah Business Magazine's 40 Under 40 award



Parade of Homes Winner in Best Architecture and Best Landscaping



Best of Houzz designations for five consecutive years

Smart Home Features

- » Programmable Thermostat
- » Video Doorbell
- » Smart Entry Lock
- » Wifi Garage Door Opener
- » Deako Interior Smart Switches (10)
- » Google Nest 7" Hub
- » Router + Access Point
- » Post-Closing White Glove Service

Kitchen Features

- » Quartz Countertops with 4" Backsplash
- » Stainless Steel Undermount Sink
- » Moen Sleek Chrome Faucet
- » Shaker Cabinets
- » 42" Upper Cabinets
- » 24" Deep Cabinet over Refrigerator
- » Solid Wood Dovetail Cabinet Drawer Box
- » Soft Close Cabinet Doors & Drawers with Full Extension Guides
- » GE Stainless Steel Self-Cleaning Range
- » GE Stainless Steel Energy Star Dishwasher
- » GE Stainless Steel Microwave
- » LED Disc Lights (Qty Per Plan)
- » 1/3 HP Garbage Disposal
- » Water Line to Refrigerator
- » Shaw LVP Flooring

Bath Features

- » Quartz Countertops with 4" Backsplash
- » White Undermount Sinks
- » Moen Gibson Chrome Faucets
- » Dual Sinks in Primary Bath with Centered Drawer Bank
- » Shaker Adult Height Cabinets
- » Solid Wood Dovetail Cabinet Drawer Box
- » Soft Close Cabinet Doors & Drawers with Full Extension Guides
- » Cultured Marble Surround and Pan in Primary Walk-in Shower
- » Tub/Shower Surround in Secondary Bath
- » Shaw LVP Flooring
- » Semi-Frameless Shower Door in Primary Bath

Interior Features

- » 10' Ceilings on Main Floor / 9' Second Floor Ceilings
- » RG6 / Cat 6e Combo (Qty Per Plan)
- » Craftsman Base & Case
- » 2-Panel Interior Doors
- » Premium Closet Shelving Layout
- » Shaw Carpet with 8lb Pad
- » Shaw LVP Flooring in Entry, Dining, Laundry & Mud Room
- » Light Textured Walls & Ceilings
- » Square Drywall Corner Bead
- » Ceiling Fan Pre-Wire in Primary Bedroom, Great Room & Loft
- » Upgraded Switches & Plugs
- » Pex Water Piping

Energy Efficiency

- » 2x6 Exterior Framing
- » R-19 Fiberglass Wall Insulation
- » R-38 Blown-In Ceiling Insulation
- » 14 Seer Air Conditioning
- » 96% Efficient Natural Gas Furnace
- » Zoned HVAC System
- » Tankless Water Heater
- » Low-E Energy Efficient Dual-Pane Windows
- » LED Light Bulbs

Exterior Features

- » 8' Exterior Entry Door
- » Upgraded Exterior Elevations with Stucco, Composite Siding & Brick (Per Plan)
- » 40-Year Architectural Shingles
- » Metal Roofing (Per Plan)
- » 8' Garage Door with 2 Transmitters & Keyless Entry
- » 2 Anti-Freeze Exterior Hose Bibs
- » Exterior Weatherproof Outlet
- » Enhanced Full Yard Landscaping with Irrigation
- » Eave Lights (Qty and Location Per Plan)
- » Composite Decking Material or Large Concrete Patio (Per Plan)

Note: All information is approximate and subject to change at anytime without notice. Consult a Candlelight Homes Sales Representative for details.

Smart Home Features

- » Programmable Thermostat
- » Video Doorbell
- » Smart Entry Lock
- » Wifi Garage Door Opener
- » Deako Interior Smart Switches (10)
- » Google Nest 7" Hub
- » Router + Access Point
- » Post-Closing White Glove Service

Kitchen Features

- » Quartz Countertops with 4" Backsplash
- » Stainless Steel Undermount Sink
- » Moen Sleek Chrome Faucet
- » Shaker Cabinets
- » 42" Upper Cabinets
- » 24" Deep Cabinet over Refrigerator
- » Solid Wood Dovetail Cabinet Drawer Box
- » Soft Close Cabinet Doors & Drawers w/ Full Extension Guides
- » GE Stainless Steel Self-Cleaning Range
- » GE Stainless Steel Energy Star Dishwasher
- » GE Stainless Steel Microwave
- » LED Disc Lights (Qty Per Plan)
- » 1/3 HP Garbage Disposal
- » Water Line to Refrigerator
- » Shaw LVP Flooring

Bath Features

- » Quartz Countertops with 4" Backsplash
- » White Undermount Sinks
- » Moen Gibson Chrome Faucets
- » Centered Sink in Primary Bath with Dual Drawer Banks
- » Shaker Adult Height Cabinets
- » Solid Wood Dovetail Cabinet Drawer Box
- » Soft Close Cabinet Doors & Drawers with Full Extension Guides
- » Walk-in Fiberglass Shower in Primary Bath
- » Tub/Shower Surround in Secondary Bath
- » Shaw LVP Flooring
- » Semi-Frameless Shower Door in Primary Bath

Interior Features

- » 9' Ceilings on Main Floor / 8' Second Floor Ceilings
- » RG6 / Cat 6e Combo (Qty Per Plan)
- » Craftsman Base & Case
- » 2-Panel Interior Doors
- » Premium Closet Shelving Layout
- » Shaw Carpet with 8lb Pad
- » Shaw LVP Flooring in Entry, Dining, Laundry & Mud Room
- » Light Textured Walls & Ceilings
- » Square Drywall Corner Bead
- » Ceiling Fan Pre-wire in Primary Bedroom, Great Room & Loft
- » Upgraded Switches & Plugs
- » Pex Water Piping

Energy Efficiency

- » 2x6 Exterior Framing
- » R-19 Fiberglass Wall Insulation
- » R-38 Blown-In Ceiling Insulation
- » 14 Seer Air Conditioning
- » 96% Efficient Natural Gas Furnace
- » Tankless Water Heater
- » Low-E Energy Efficient Dual-Pane Windows
- » LED Light Bulbs

Exterior Features

- » 8' Exterior Entry Door
- » Whole House James Hardie Color Plus Siding
- » 40-Year Architectural Shingles
- » 8' Garage Door with 2 Transmitters & Keyless Entry
- » 2 Anti-Freeze Exterior Hose Bibs
- » Exterior Weatherproof Outlet
- » Enhanced Front Yard Landscaping with Irrigation
- » Eave Lights (Qty and Location Per Plan)
- » Composite Decking Material on Patio Steps (Per Plan)
- » Large Concrete Patio (Per Plan)
- » Vinyl Wing Fencing with One Gate (Per Plan)

Note: All information is approximate and subject to change at anytime without notice. Consult a Candlelight Homes Sales Representative for details.



A PLACE WITH
OVER 400
ACRES OF
PARKS, TRAILS
AND OPEN
SPACE

**WITH CURATED
AMENITIES DESIGNED
TO GET YOUR FAMILY
OUT IN NATURE**

firefly