



firefly

LIFE UNPLUGGED.



firefly

WELCOME TO FIREFLY
A NEW KIND OF COMMUNITY



TAP TO VIEW VIDEO

firefly

A PLACE
WHERE KIDS
WILLINGLY
DITCH THEIR
DEVICES

AND CHOOSE A LIFE
OF ADVENTURE AND
ACTIVITY



firefly



A PLACE
WHERE
ACTIVITIES
AND EVENTS
ARE PLANNED

**FOR OUR KIDS BY
A FULL-TIME
ACTIVITIES DIRECTOR**

firefly

A PLACE
FOR OUR
KIDS TO
REACH
THEIR FULL
POTENTIAL

**BY MINIMIZING
THEIR TIME ON
DIGITAL DEVICES**



firefly

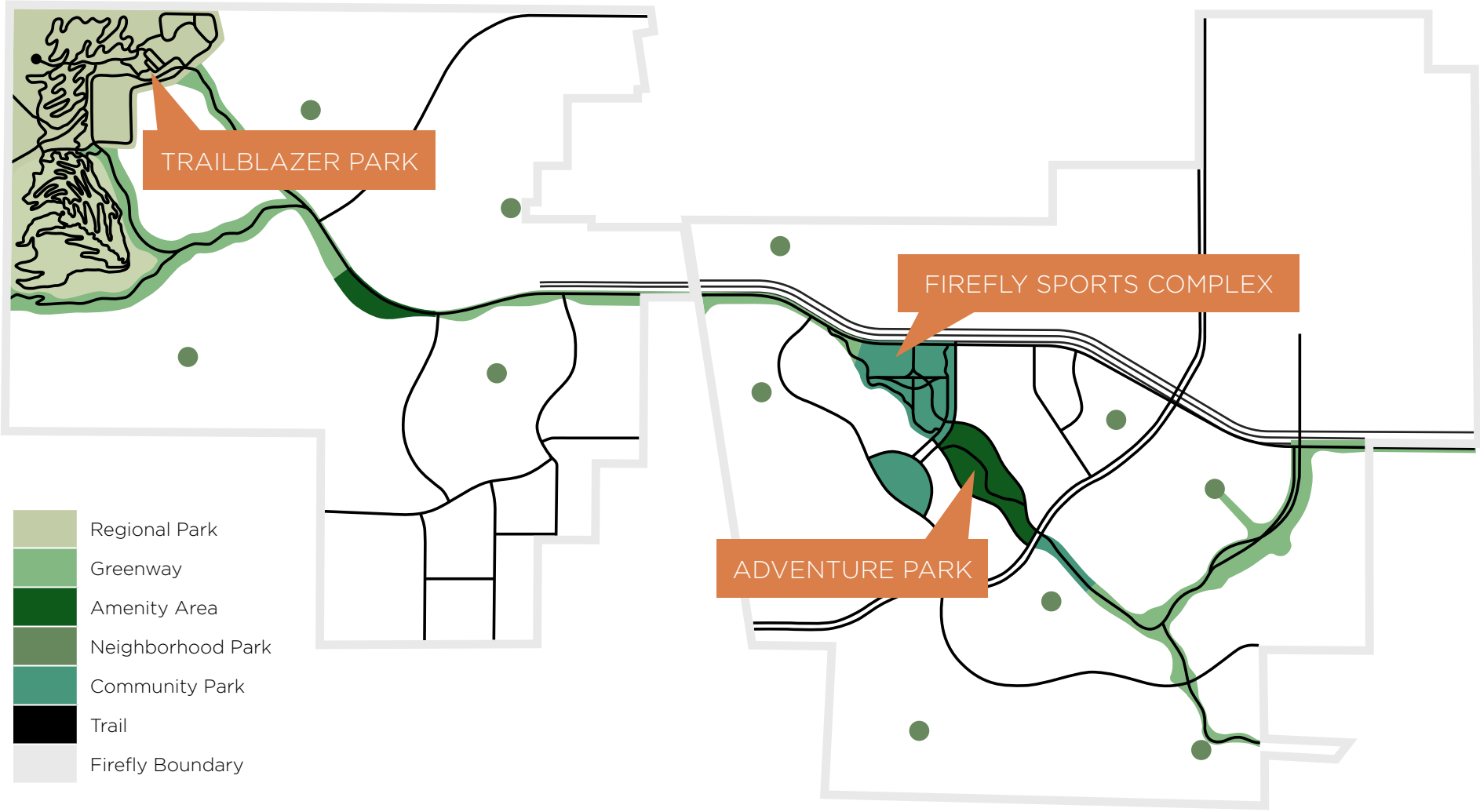


A PLACE WITH
OVER 350
ACRES OF
PARKS, TRAILS
AND OPEN
SPACE

**INCLUDING MODERN
AMENITIES DESIGNED
TO GET KIDS OUTSIDE
WITHOUT DIGITAL
DEVICES**

firefly

PARKS, TRAILS & OPEN SPACE MAP



Plan is conceptual and subject to change.



FIREFLY SPORTS COMPLEX

- SOCCER FIELDS
- PLAYGROUND
- 9 PICKLEBALL COURTS
- 2 BASKETBALL COURTS
- SKATE/WHEELS PARK
- BOULDER CLIMBING WALL
- COVERED PICNIC PAVILION
- TRAIL SYSTEM

firefly

FIREFLY SPORTS COMPLEX

- 1 Soccer Fields
- 2 Playground
- 3 9 Pickleball Courts
- 4 2 Basketball Courts
- 5 Skate/Wheels Park
- 6 Boulder Climbing Wall
- 7 Covered Picnic Pavilion
- 8 Trail System



Plan is conceptual and subject to change.

PICKLEBALL COURTS FIREFLY SPORTS COMPLEX



firefly

SOCCER FIELDS FIREFLY SPORTS COMPLEX



Plan is conceptual and subject to change.

SKATE/WHEELS PARK FIREFLY SPORTS COMPLEX



firefly



ADVENTURE PARK

- INDOOR/OUTDOOR PLAYLAND
- SPLASHTOWN
- SOCCER FIELDS
- OUTDOOR AMPHITHEATER

firefly

ADVENTURE PARK



- 1 Indoor/Outdoor Playland
- 2 Splashtown
- 3 2 Soccer Fields
- 4 Outdoor Amphitheater

Plan is conceptual and subject to change.

SPLASHTOWN ADVENTURE PARK



Plan is conceptual and subject to change.

firefly

OUTDOOR AMPHITHEATER ADVENTURE PARK



Plan is conceptual and subject to change.

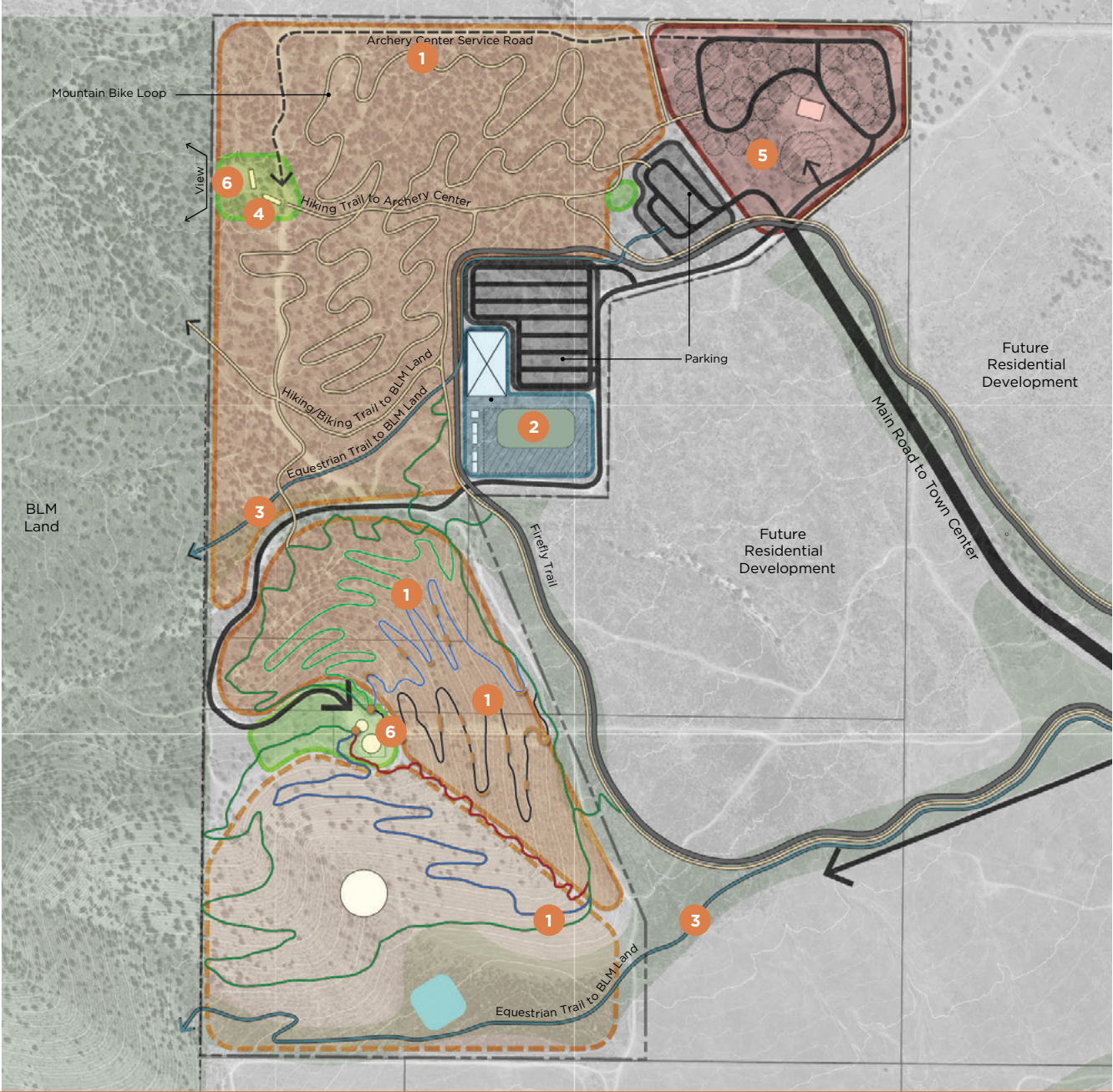


TRAILBLAZER PARK

- DOWNHILL MOUNTAIN BIKE TRAILS
- 4H/FFA AGRICULTURE CENTER
- EQUESTRIAN TRAILS
- ARCHERY & AXE THROWING CENTER
- CAMPGROUND
- LOOKOUT POINT

firefly

TRAILBLAZER PARK



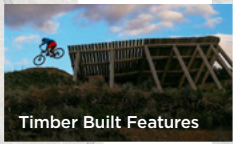
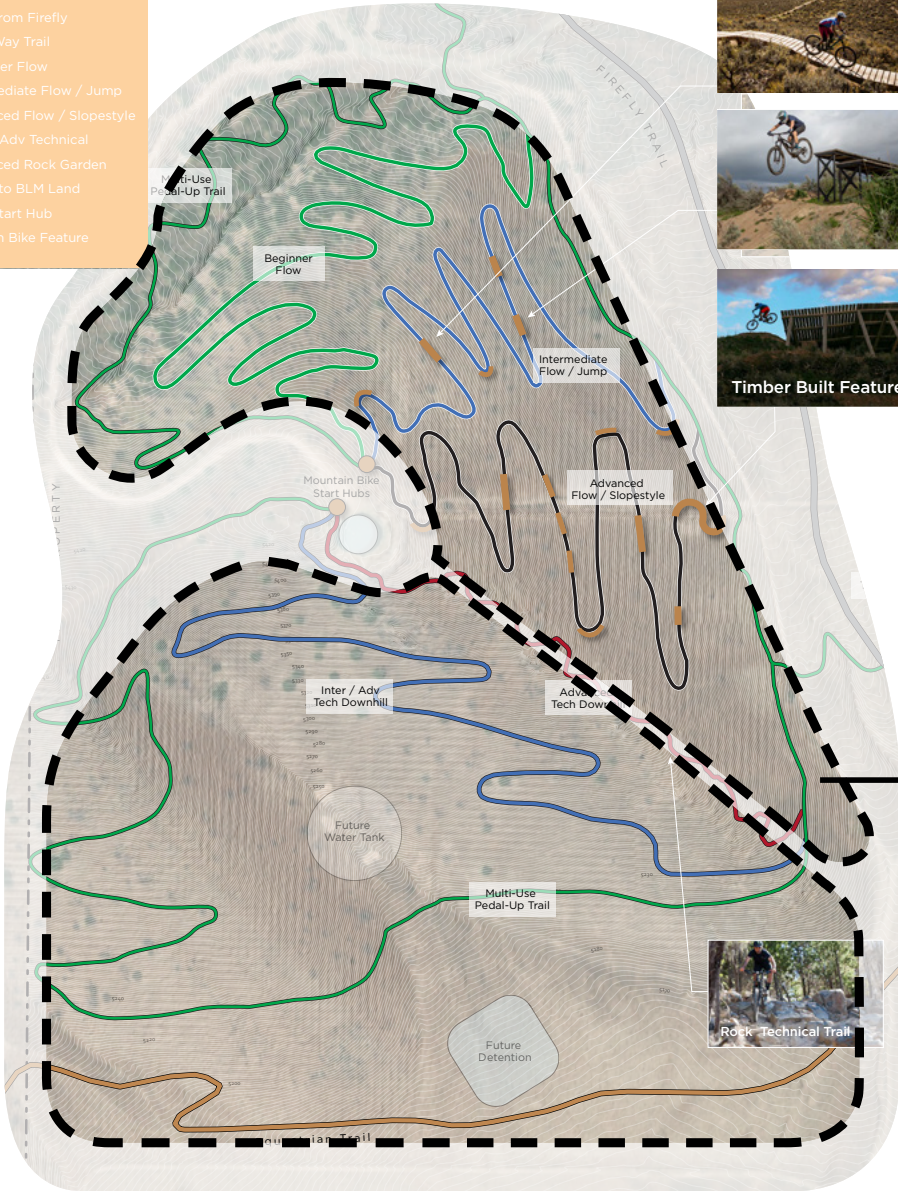
- 1 Downhill Mountain Bike Trails
- 2 4H/FFA Agriculture Center
- 3 Equestrian Trails
- 4 Archery & Axe Throwing Center
- 5 Campground
- 6 Lookout Point

Plan is conceptual and subject to change.

MOUNTAIN BIKE TRAILS TRAILBLAZER PARK

LEGEND

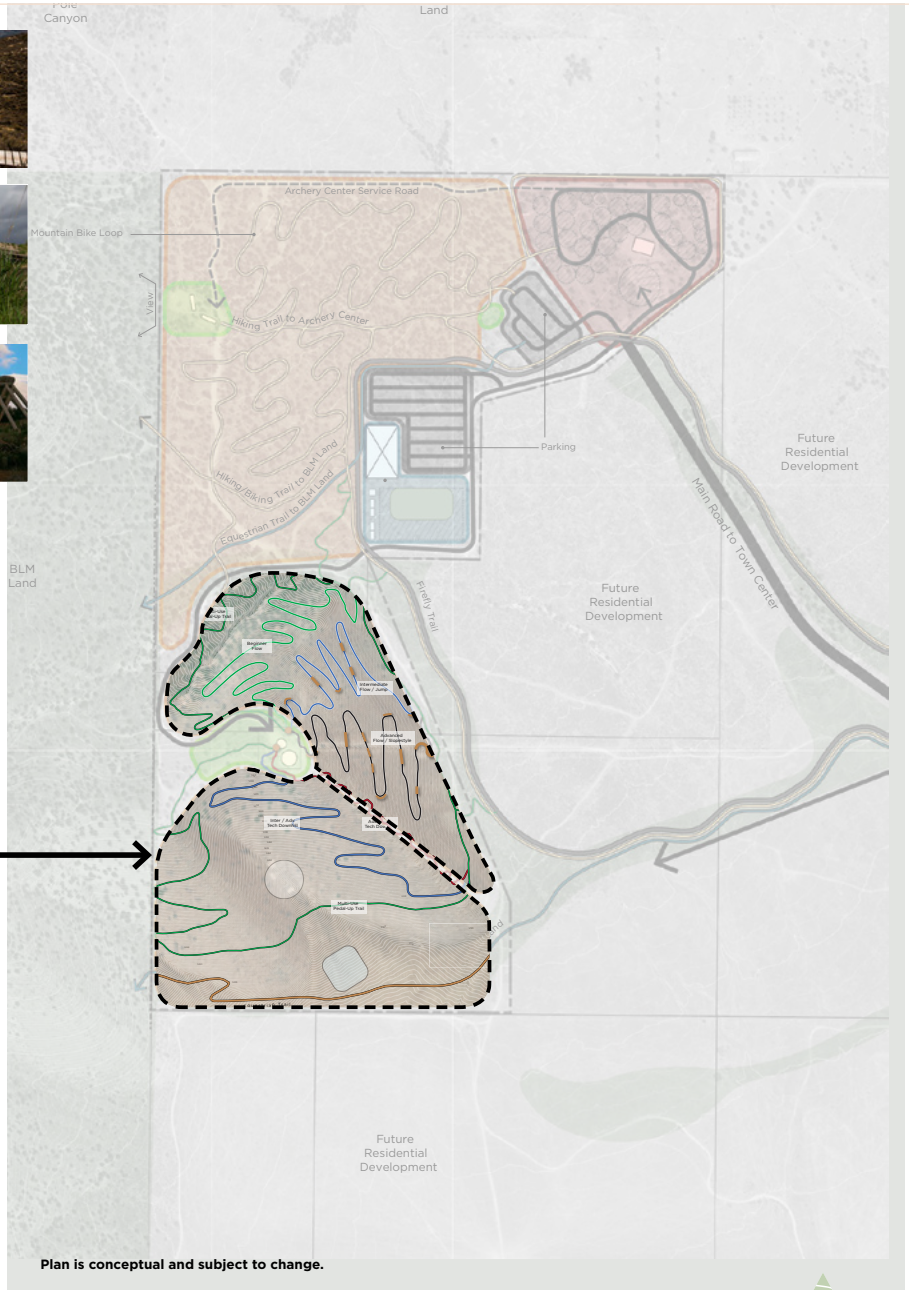
-  Multi-Use Path from Firefly
-  Multi-Use Two-Way Trail
-  Downhill Beginner Flow
-  Downhill Intermediate Flow / Jump
-  Downhill Advanced Flow / Slopestyle
-  Downhill Inter / Adv Technical
-  Downhill Advanced Rock Garden
-  Equestrian Trail to BLM Land
-  Mountain Bike Start Hub
-  Timber Mountain Bike Feature



Timber Built Features



Rock Technical Trail



Plan is conceptual and subject to change.

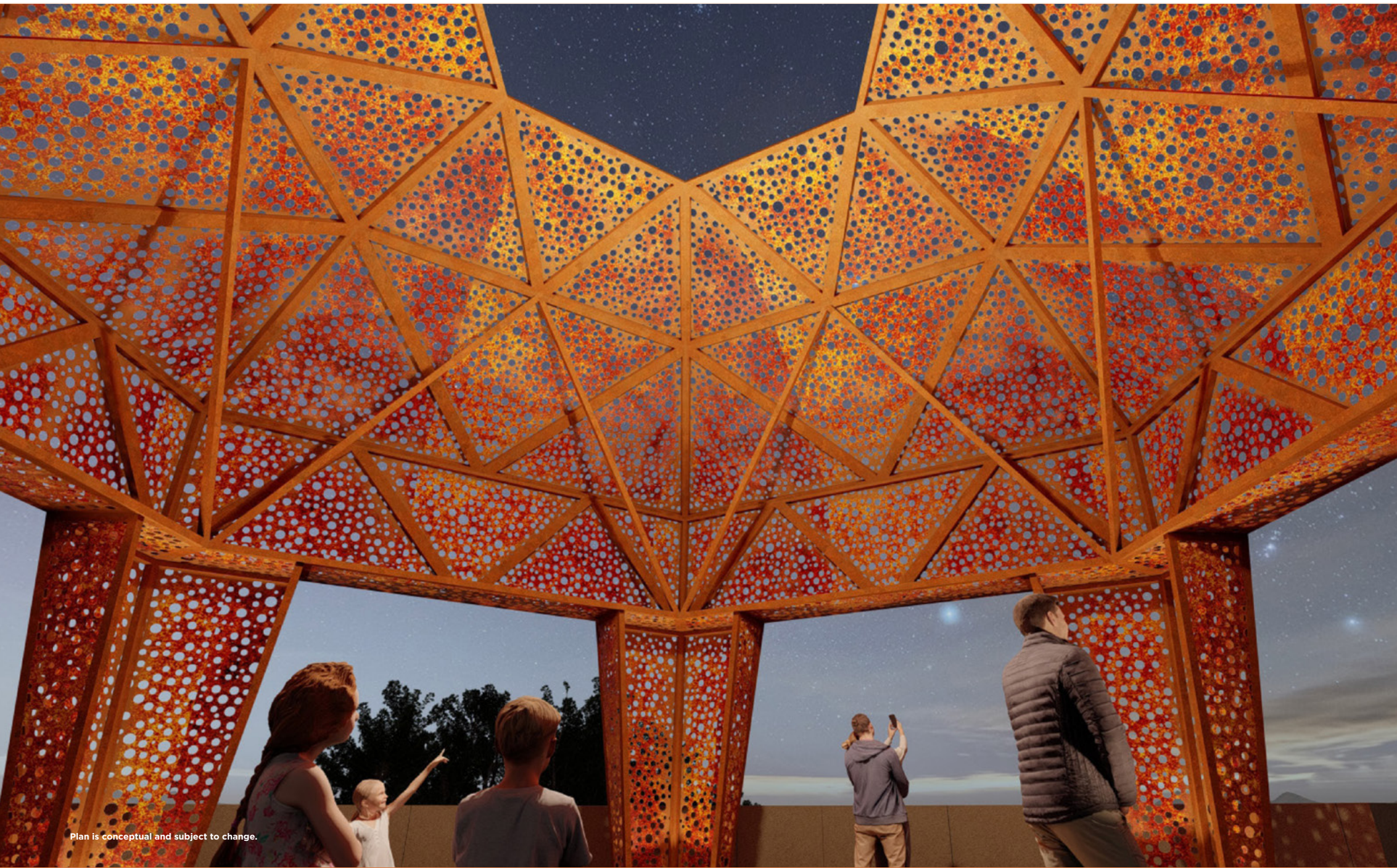
DOWNHILL MOUNTAIN BIKE COURSE



firefly



Plan is conceptual and subject to change.



Plan is conceptual and subject to change.

RECREATIONAL AREAS TRAILBLAZER PARK



Plan is conceptual and subject to change.



firefly



A PLACE
WHERE
FAMILIES
CONNECT
WITHOUT
WIFI

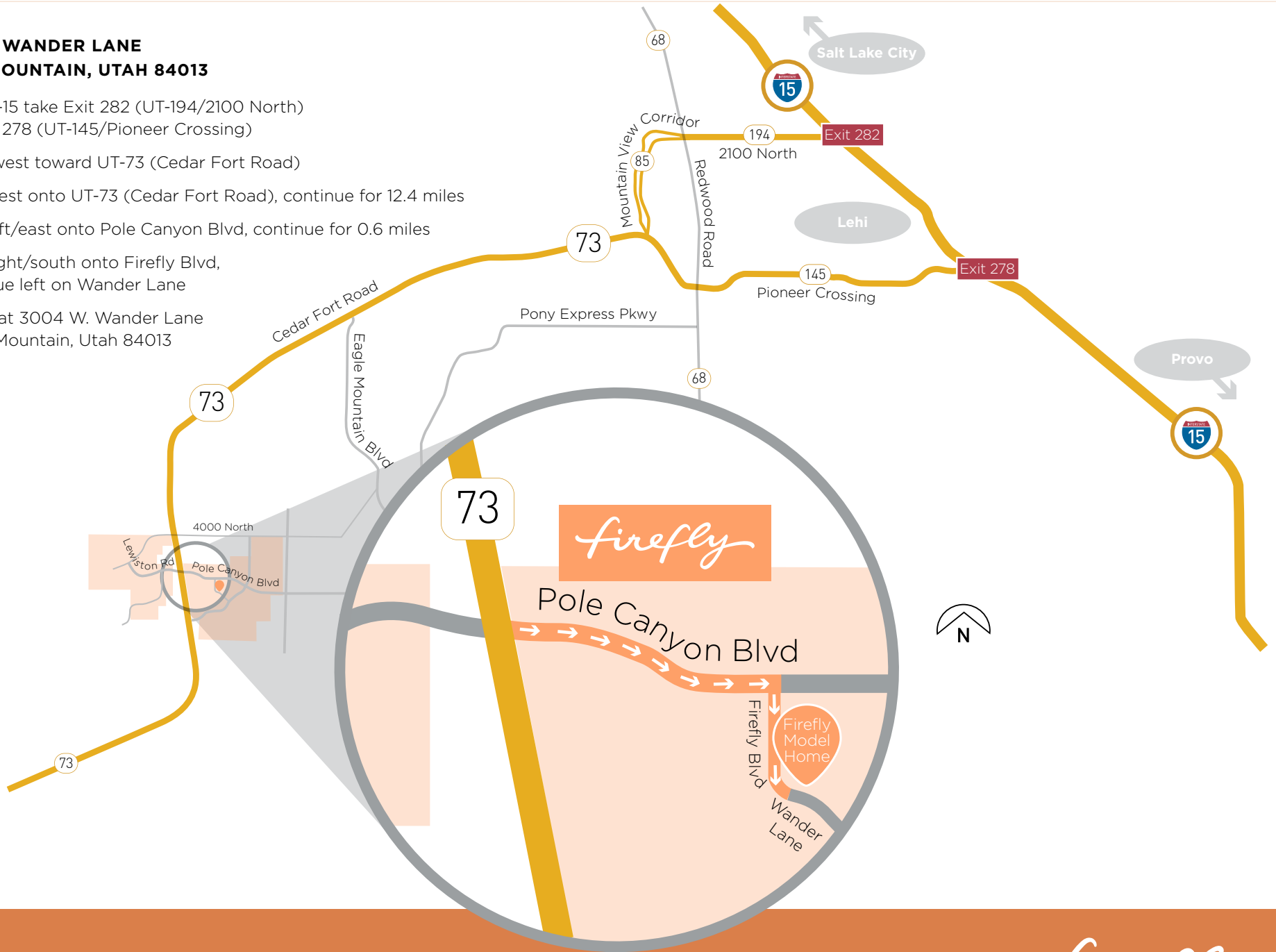
**AND KIDS THRIVE
WITHOUT DEVICES**

firefly

DRIVING DIRECTIONS TO FIREFLY FROM I-15

3004 W. WANDER LANE EAGLE MOUNTAIN, UTAH 84013

1. From I-15 take Exit 282 (UT-194/2100 North) or Exit 278 (UT-145/Pioneer Crossing)
2. Head west toward UT-73 (Cedar Fort Road)
3. Turn west onto UT-73 (Cedar Fort Road), continue for 12.4 miles
4. Turn left/east onto Pole Canyon Blvd, continue for 0.6 miles
5. Turn right/south onto Firefly Blvd, continue left on Wander Lane
6. Arrive at 3004 W. Wander Lane Eagle Mountain, Utah 84013



PHASE ONE DEVELOPMENT



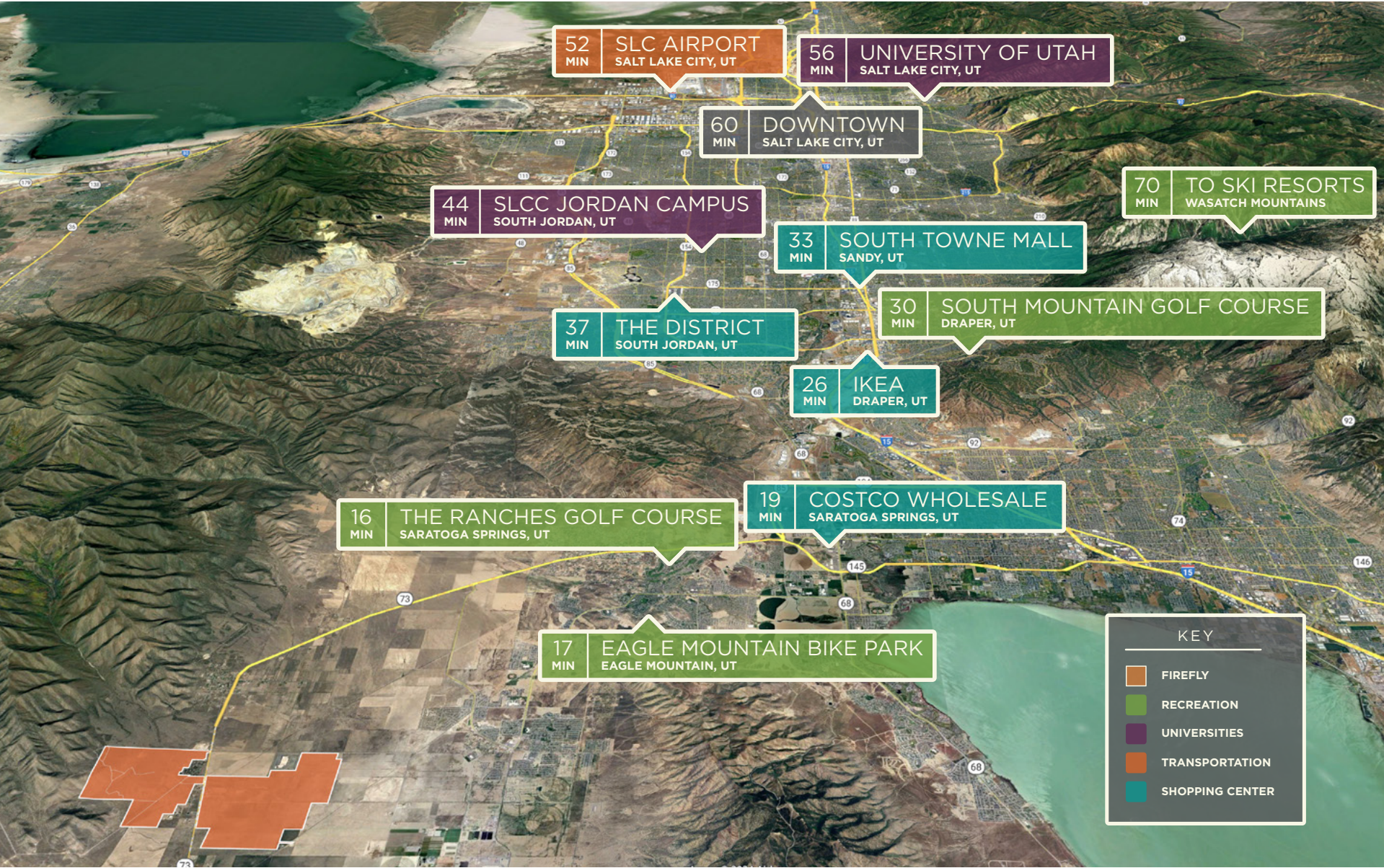
A PLACE
WITH SO
MANY
WAYS TO
BE ACTIVE

**RIGHT IN YOUR
OWN BACKYARD**



firefly

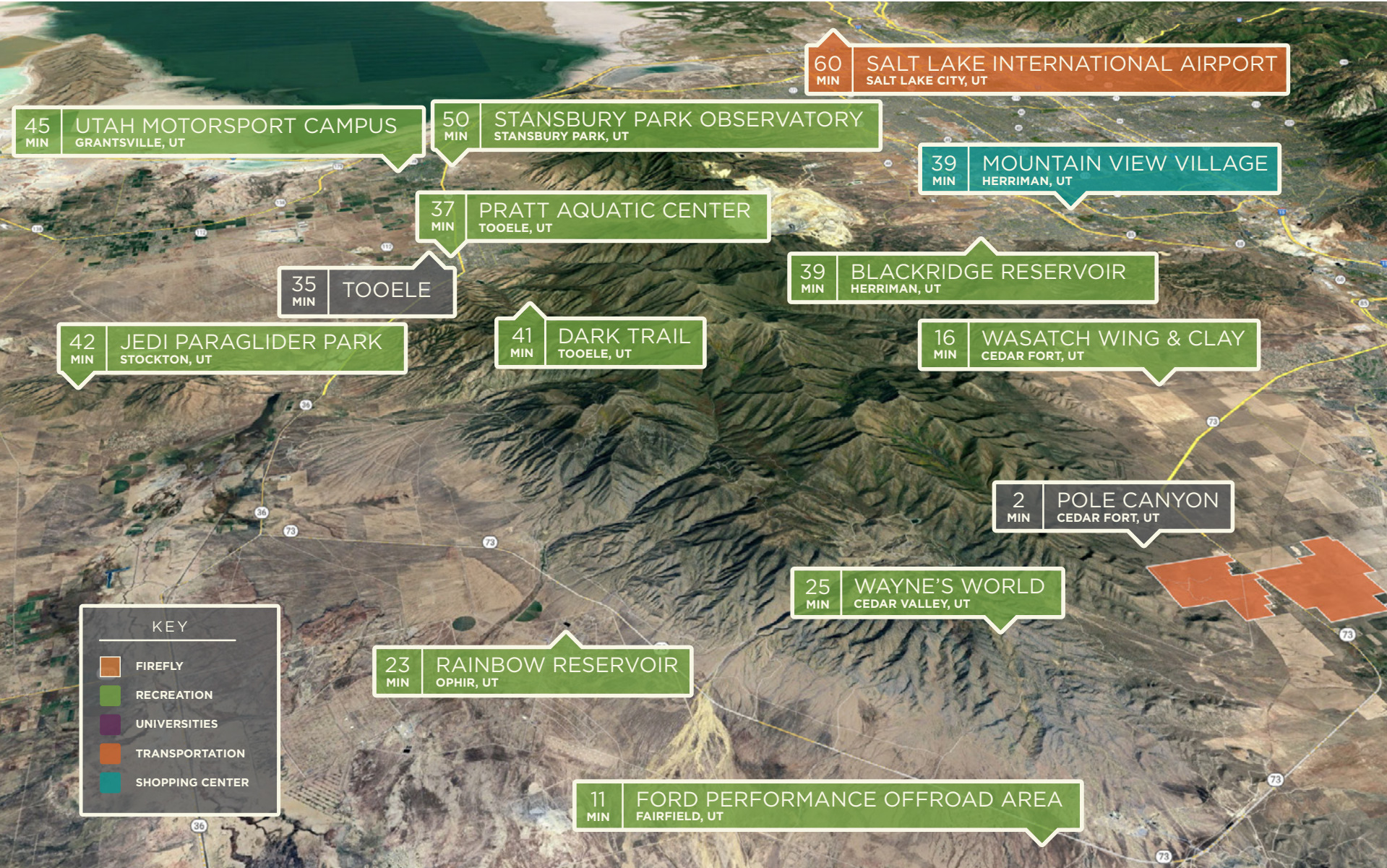
SALT LAKE COUNTY POINTS OF INTEREST



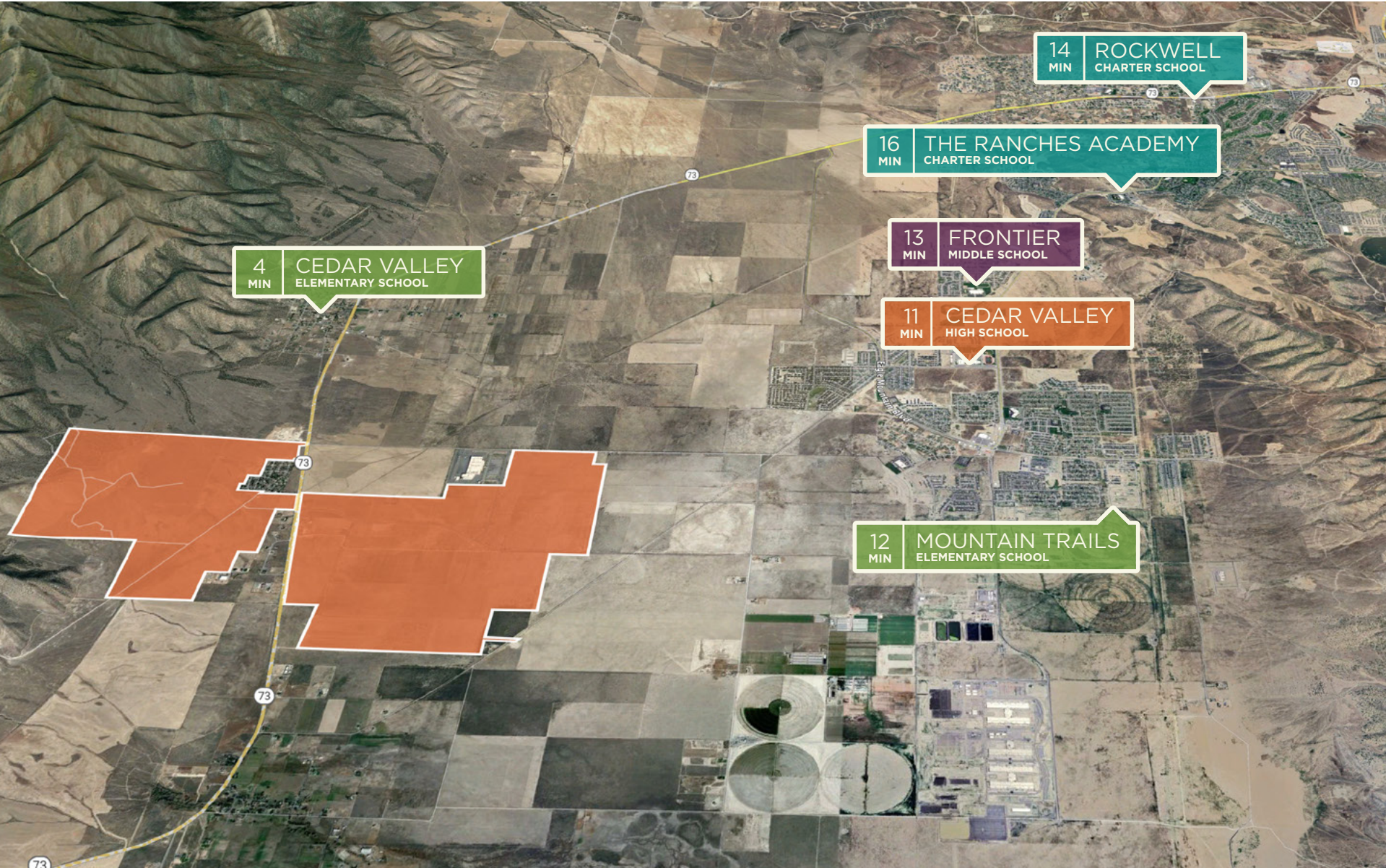
UTAH COUNTY POINTS OF INTEREST



TOOELE COUNTY POINTS OF INTEREST



LOCAL SCHOOLS



WHEN KIDS
GROW UP,
THEY'LL
HAVE THE
BEST STORIES
TO TELL

IMAGINE A NEW STORY
FOR YOUR LIFE AND
START LIVING IT



firefly

HOMEBUILDER



Candlelight *homes*[™]
We Build Beautiful[™]

We Build Beautiful[™]

Candlelight Homes is building more than beautiful homes at Firefly. We're building a place where families can easily disconnect from the digital world and spend meaningful time together.

Each Candlelight home is carefully crafted with unique design features and high quality materials ensuring your home remains a place of quality and comfort for years to come.

We're confident you'll be proud of your home and you'll want to share your positive building experience with family and friends.



Candlelight *homes*
We Build Beautiful[™]

AWARD-WINNING HOMEBUILDER

**Inc.
5000**

*Ranked 1027 in the U.S. and
12 in the Salt Lake City metro
area in 2014 in the Inc. 5000
Fastest-Growing Privately Held
Companies in America*



*Three consecutive years as one of
Utah Business Magazine's Fast 50
companies and two consecutive
years as one of Utah's Emerging 8
companies*

100
UTAH ONE HUNDRED

*Three consecutive years as one of
the Emerging Elite Companies and
three consecutive years as one of the
Utah 100 by MountainWest Capital
Network*

**Professional
Builder**

*Professional Builder awards
for Housing Giants and 40
Under 40*



*Two consecutive years as Builder
Magazine's Top 200 Builders in
the nation*



*Four consecutive years as one of
Utah Valley Magazine's
Best Home Builders*

**FORTY
UNDER 40**

*Utah Business Magazine's
40 Under 40 award*

Salt Lake
**PARADE
of HOMES™**

*Parade of Homes Winner in
Best Architecture and Best
Landscaping*


Best of
houzz

*Best of Houzz designations for five
consecutive years*

Candlelight*homes*
We Build Beautiful.™

16 FLOOR PLANS TO CHOOSE FROM



ENGELBERG



CHAMONIX



INNSBRUCK



ST. MORITZ



BANFF



INTERLAKEN



MONARCH



NORTHSTAR



POMERELLE



KEYSTONE



SNOWMASS



MAMMOTH



DURANGO



SUN VALLEY



ASPEN



SILVERTON

[VIEW ALL FLOOR PLANS ONLINE](#)

2 TOWNHOME FLOOR PLANS TO CHOOSE FROM MORE COMING SOON



CASCADE



COTTONWOOD

[VIEW ALL FLOOR PLANS ONLINE](#)

AVAILABLE HOMES MORE COMING SOON

CASCADE



Eagle Mountain, UT \$374,990

COTTONWOOD



Eagle Mountain, UT \$359,990

SNOWMASS



Eagle Mountain, UT

NORTHSTAR



Eagle Mountain, UT \$549,990

ENGLEBERG



Eagle Mountain, UT \$584,000

INTERLAKEN



Eagle Mountain, UT

[VIEW ALL AVAILABLE HOMES ONLINE](#)

CHAMONIX



MODEL HOME | ARCHITECTURAL SERIES

Candlelight *homes*
We Build Beautiful.

DETAILS

First Floor Sq Ft	1,038
Second Floor Sq Ft	1,184
Total Finished Sq Ft	2,241
Basement Sq Ft	1,029
Bedrooms	3
Baths	2.5
Width	30'

ELEVATIONS

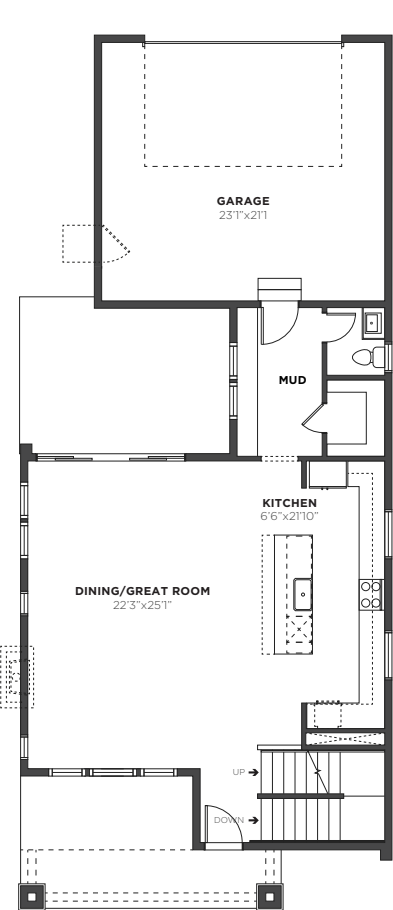
PRAIRIE



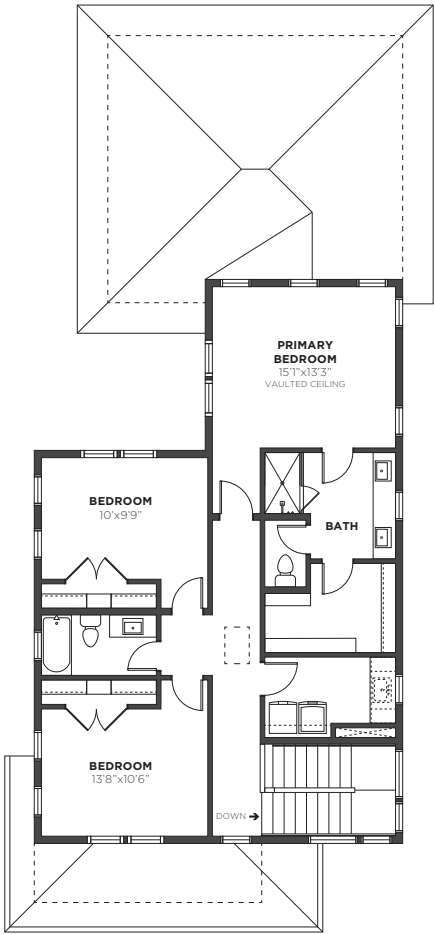
SCANDINAVIAN



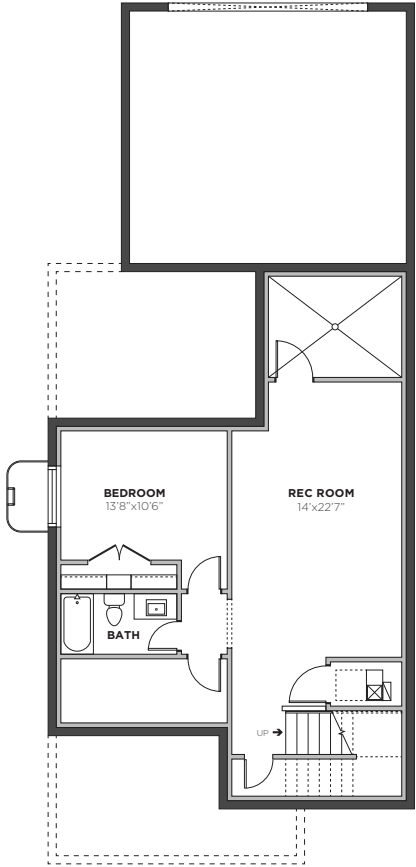
Plans are conceptual and subject to change.



FIRST FLOOR



SECOND FLOOR



OPT. FINISHED BASEMENT

KEYSTONE



MODEL HOME | DESIGNER SERIES

Candlelight *homes*
We Build Beautiful.

DETAILS

First Floor Sq Ft	1,126
Second Floor Sq Ft	1,281
Total Finished Sq Ft	2,407
Basement Sq Ft	1,140
Bedrooms	3
Baths	2.5
Width	40'

ELEVATIONS

FARMHOUSE



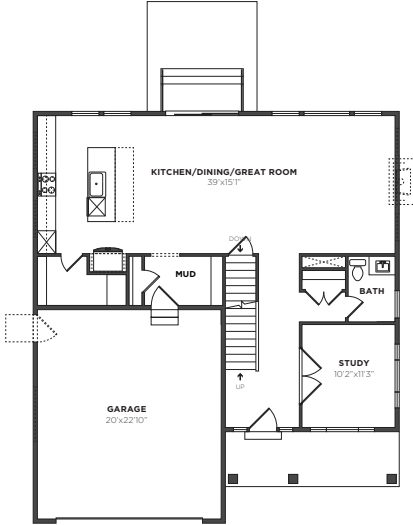
PRAIRIE



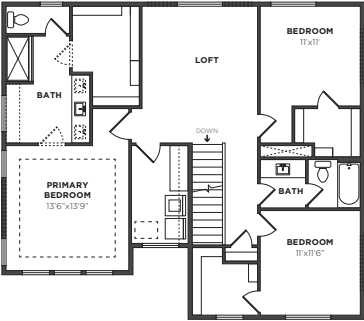
TRANSITIONAL



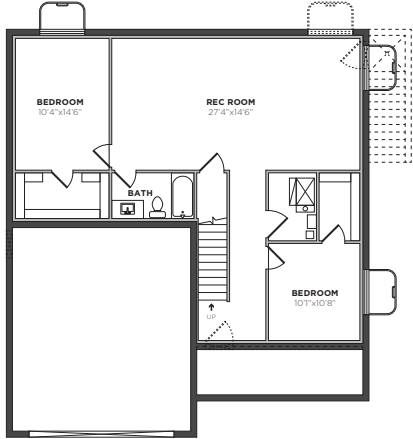
Plans are conceptual and subject to change.



FIRST FLOOR



SECOND FLOOR



OPT. FINISHED BASEMENT

ST. MORITZ



MODEL HOME | ARCHITECTURAL SERIES

Candlelight *homes*
We Build Beautiful.

DETAILS

First Floor Sq Ft	1,607
Second Floor Sq Ft	919
Total Finished Sq Ft	2,526
Basement Sq Ft	1,619
Bedrooms	4
Baths	2.5
Width	35'

ELEVATIONS

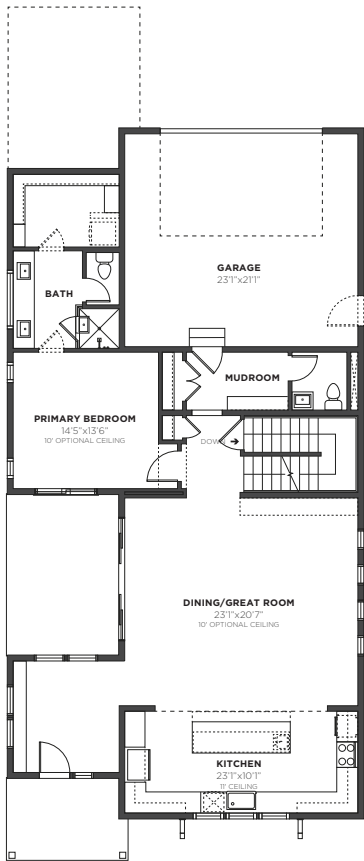
SCANDINAVIAN



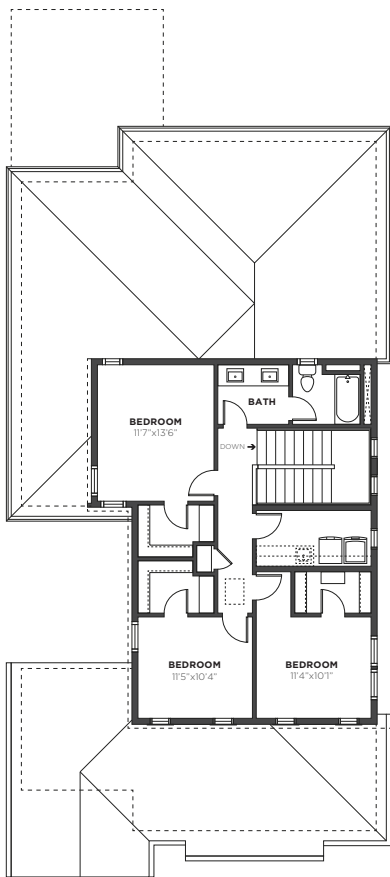
FARMHOUSE



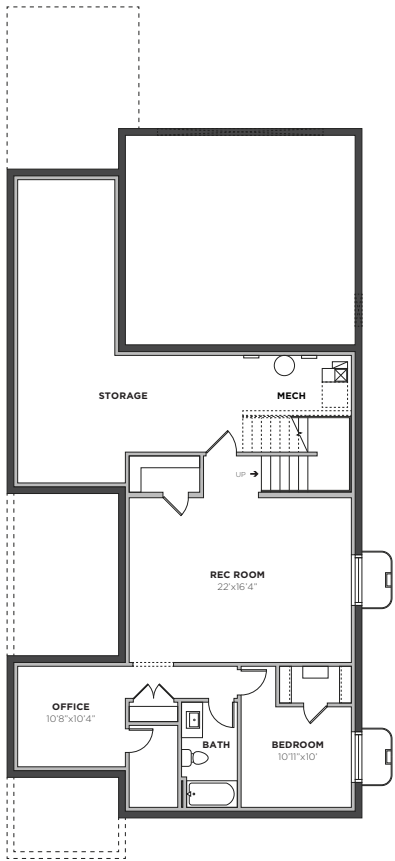
Plans are conceptual and subject to change.



FIRST FLOOR



SECOND FLOOR



OPT. FINISHED BASEMENT

SUN VALLEY



MODEL HOME | DESIGNER SERIES

Candlelight *homes*
We Build Beautiful.

DETAILS

First Floor Sq Ft	1,541
Second Floor Sq Ft	1,043
Total Finished Sq Ft	2,584
Basement Sq Ft	1,553
Bedrooms	4
Baths	2.5
Width	50'

ELEVATIONS

FARMHOUSE



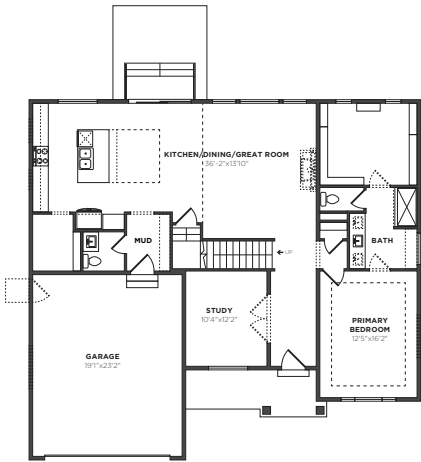
PRAIRIE



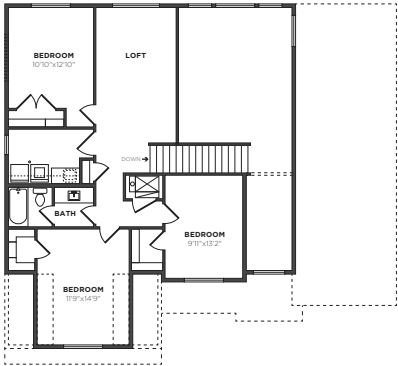
TRANSITIONAL



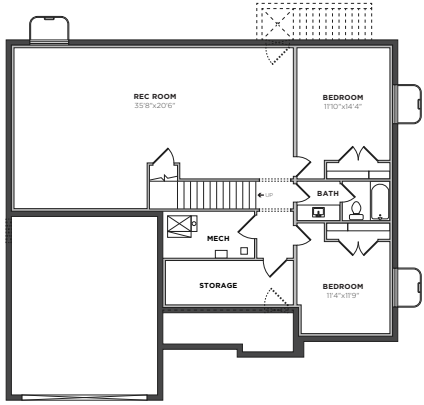
Plans are conceptual and subject to change.



FIRST FLOOR



SECOND FLOOR



OPT. FINISHED BASEMENT

CASCADE | COTTONWOOD



TOWNHOMES

Candlelight *homes*
We Build Beautiful.

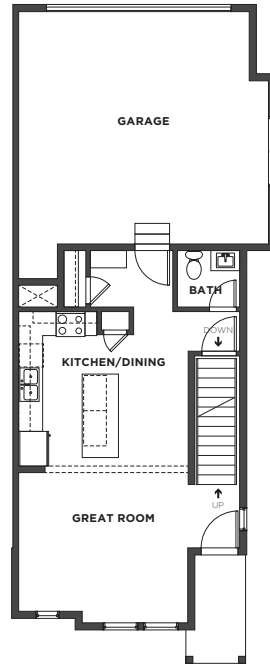
DETAILS

First Floor Sq Ft	621
Second Floor Sq Ft	987
Total Finished Sq Ft	1,608
Basement Sq Ft	563
Bedrooms	3
Baths	2.5

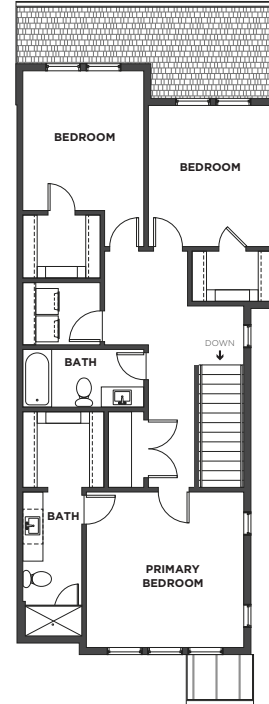
ELEVATIONS



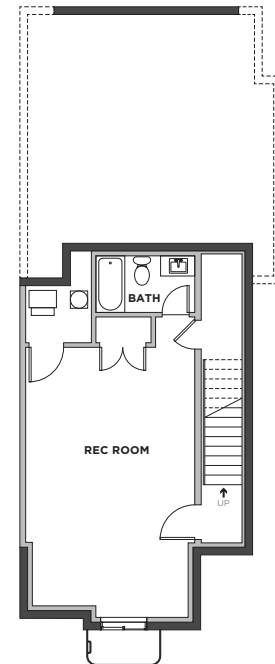
Plans are conceptual and subject to change.



FIRST FLOOR



SECOND FLOOR



OPT. FINISHED BASEMENT

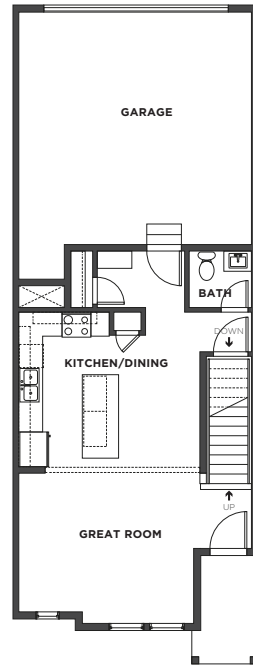
DETAILS

First Floor Sq Ft	644
Second Floor Sq Ft	981
Total Finished Sq Ft	1,625
Basement Sq Ft	610
Bedrooms	3
Baths	2.5

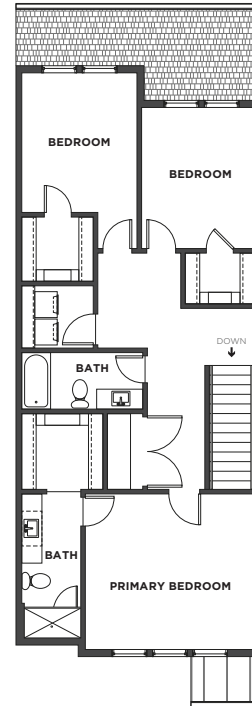
ELEVATIONS



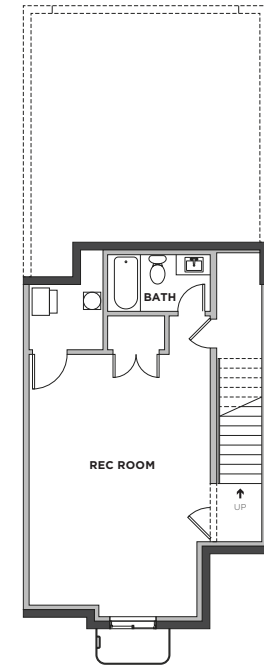
Plans are conceptual and subject to change.



FIRST FLOOR



SECOND FLOOR



OPT. FINISHED BASEMENT